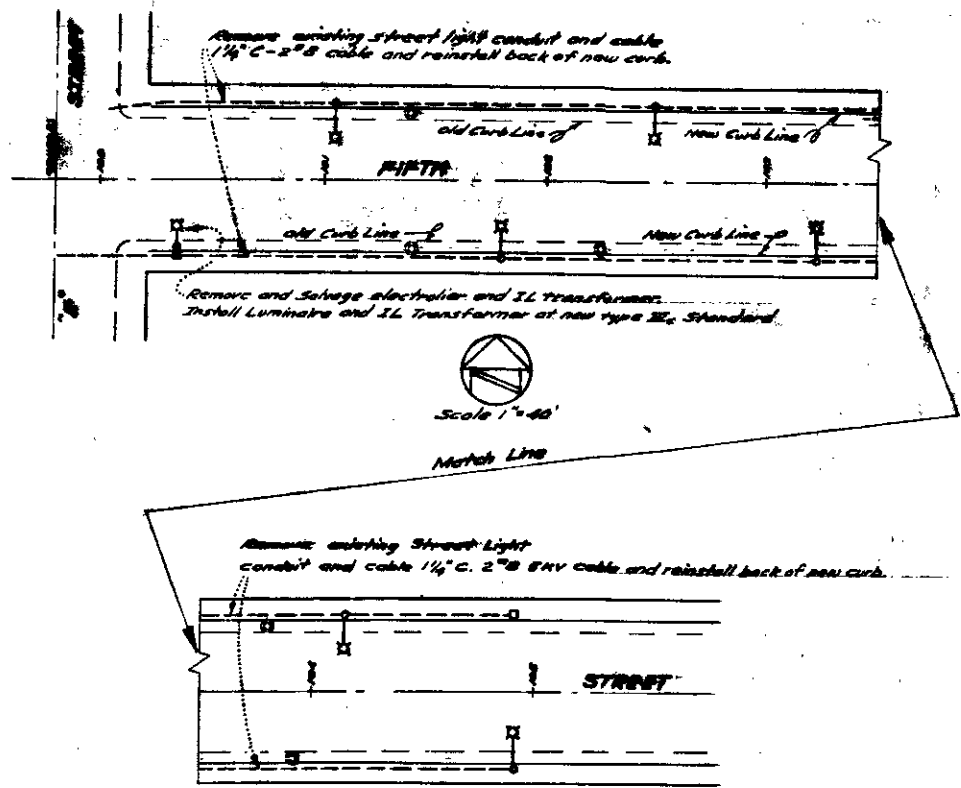
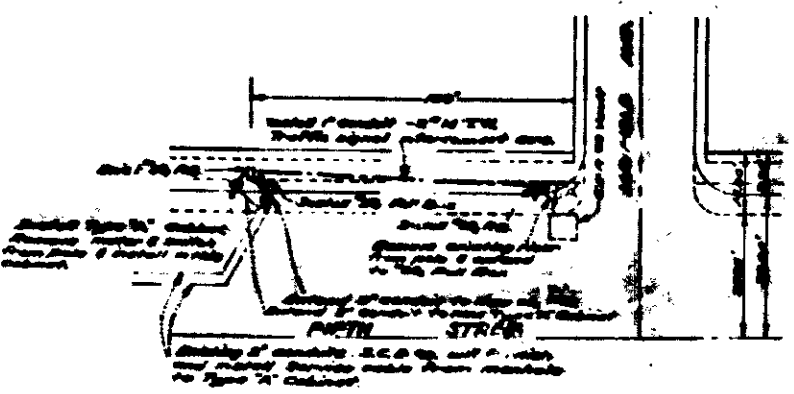
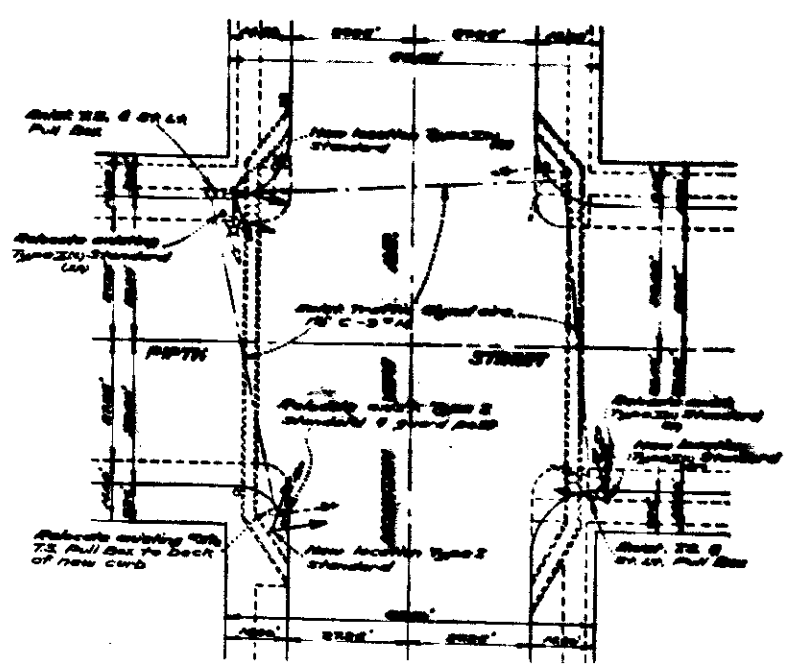
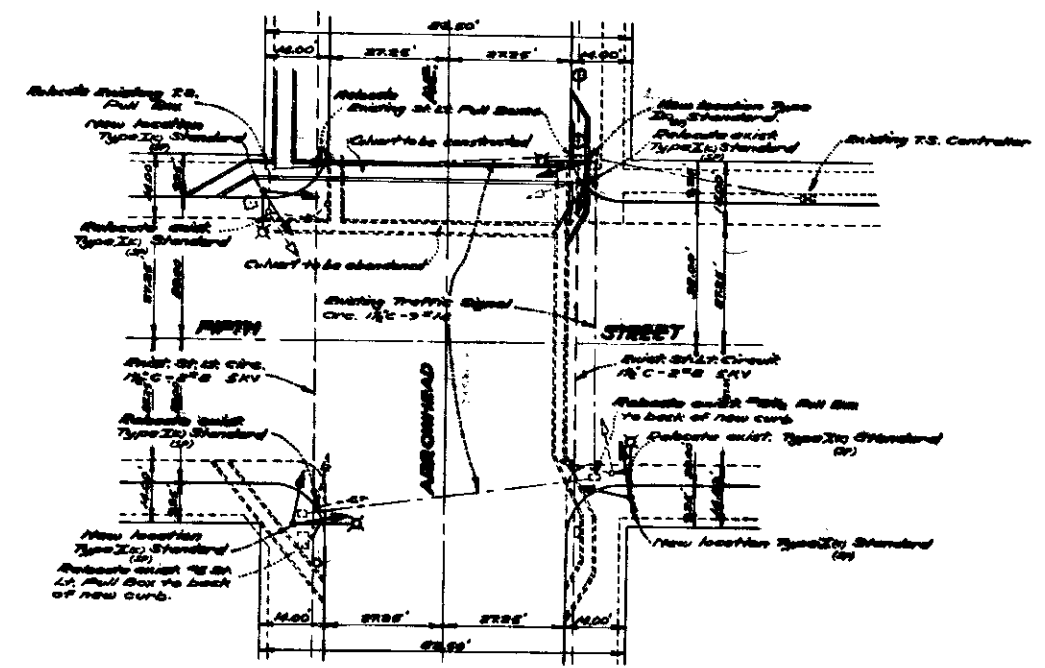
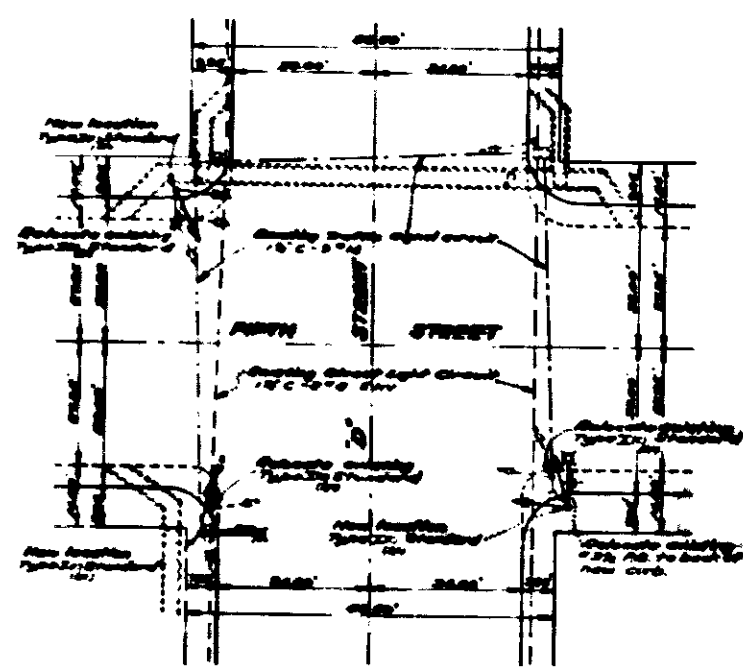
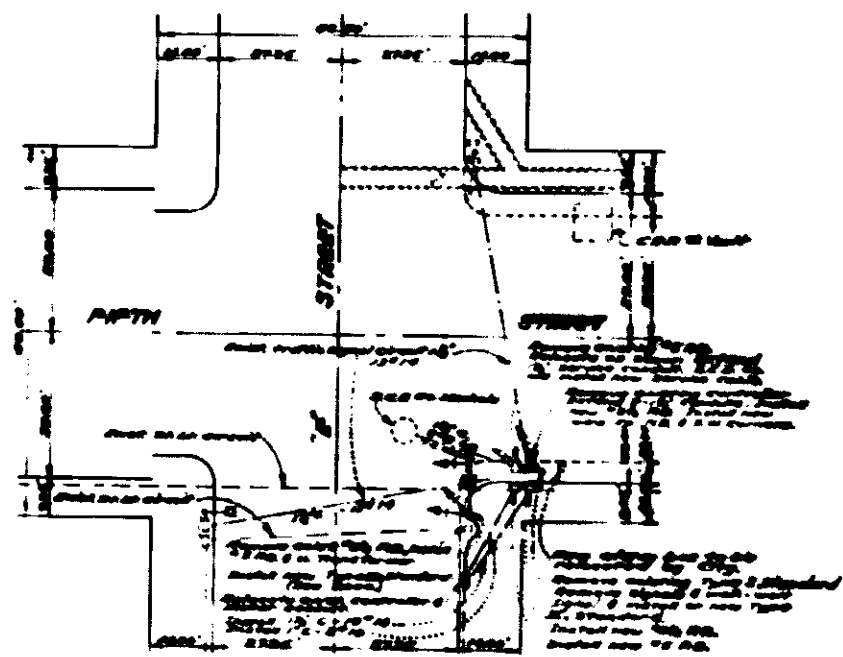


**TRAFFIC SIGNALS
AND
SAFETY LIGHTING**
Scale - 1" = 20'

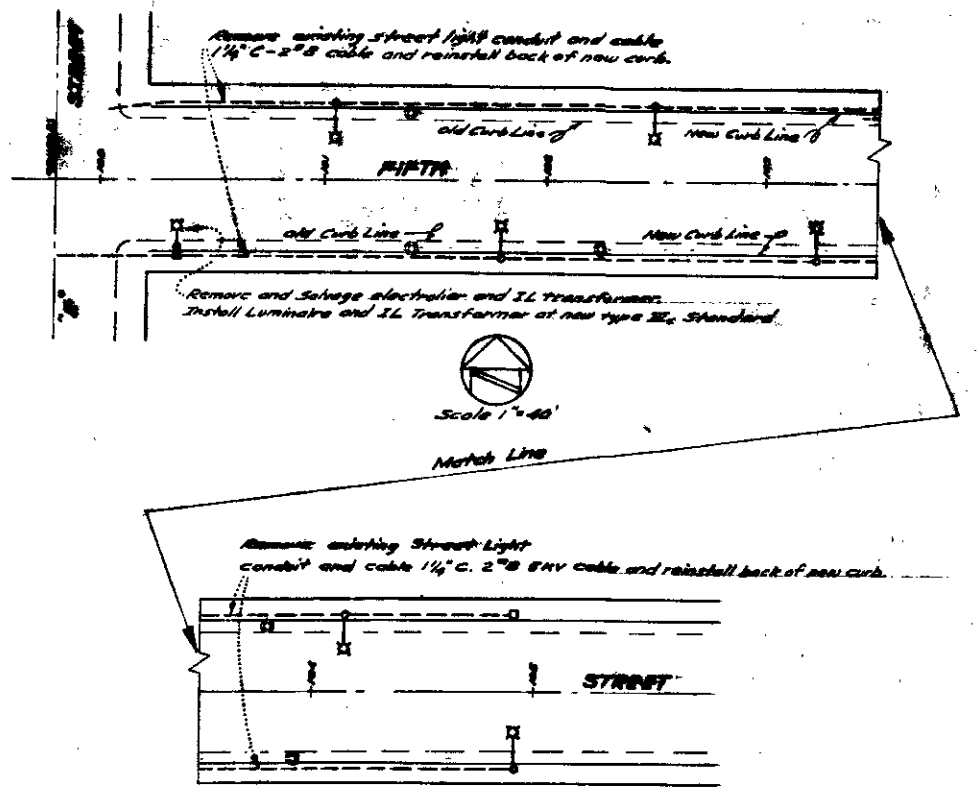


Scale 1" = 40'

- ⊙ Existing upright type electric to be removed and salvaged.
- ⊠ Repositioned electric and I.L. transformer.
- Repositioned pull box.



**TRAFFIC SIGNALS
AND
SAFETY LIGHTING**
Scale - 1" = 20'



Scale 1" = 40'

Match Line

- ⊙ Existing upright type electric to be removed and salvaged.
- ⊠ Repositioned electric and I.L. transformer.
- Repositioned pull box.